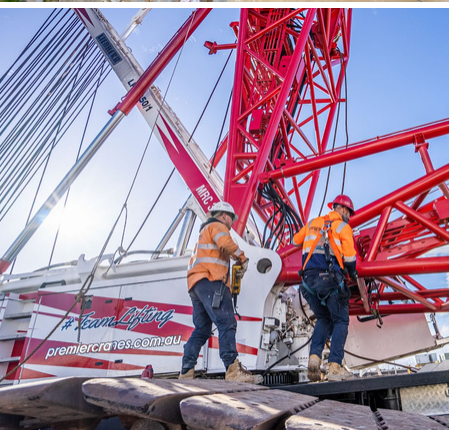
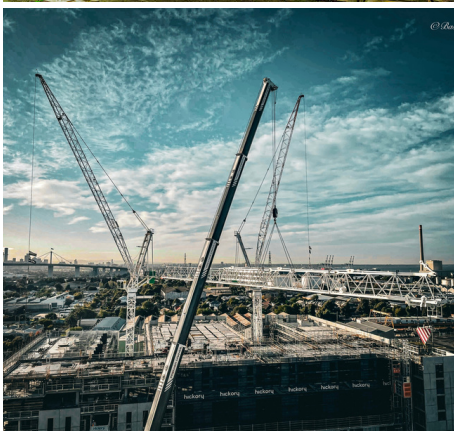
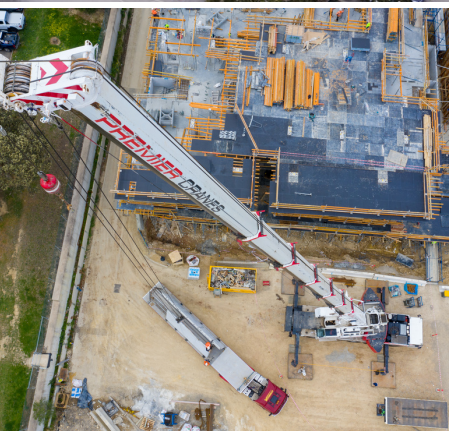


CAPABILITY STATEMENT



PREMIER
CRANES AND RIGGING
#TeamLifting



Fleet

SLEW CRANES



20t 2 x Tadano Bubble Cranes



40t Terex Mobile Crane



50t 2 x Liebherr Mobile Cranes



60t 2 x Liebherr Mobile Cranes



60t Tadano Mobile Crane



100t Tadano Mobile Crane



100t Liebherr Mobile Crane



120t 2 x Liebherr Mobile Cranes



200t Liebherr Mobile Crane



220t Liebherr Mobile Crane



250t 2 x Liebherr Mobile Cranes



450t 2 x Liebherr Mobile Cranes

CRAWLER CRANES



350t Liebherr Crawler Crane

MORE CRANES



COMING SOON

FRANNA CRANES



25t 7 x Franna Cranes



40t 5 x Franna Cranes

TRANSPORT



Semia



Rigids



Heavy Haulage

SCAN ME



CONTACT US

☎ (03) 9311 1499

✉ sales@premiercranes.com.au

📍 7-8 Ovens Court, Sunshine West, VIC 3020

Start-to-Finish Lifting Solutions

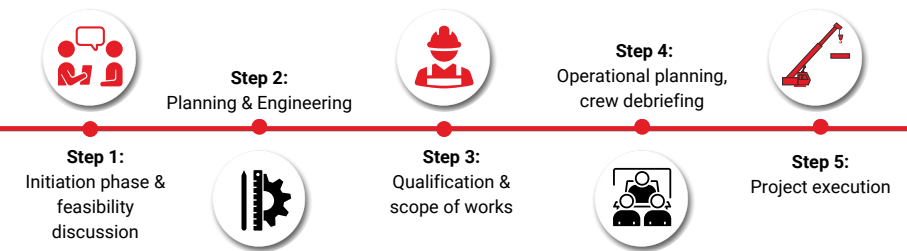


WHY

Premier believe that just showing up to do the lifts is not enough.

You deserve trustworthy lifting solutions, a team you can count on, and results that will exceed your expectations **#TeamLifting**

HOW

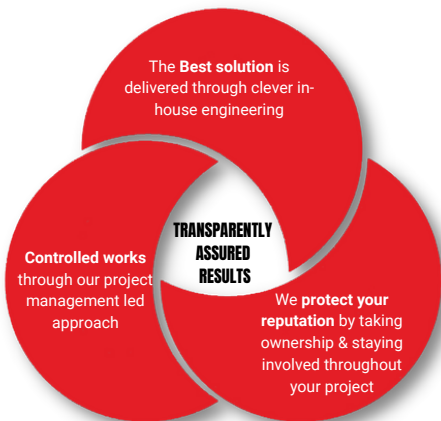


WHAT

Premier helps Melbourne's construction and infrastructure projects with start-to-finish lifting solutions including planning, engineering, contracts, cranes & rigging!

✓ Project Management ✓ Structural Installations ✓ Logistics ✓ Traffic Management ✓ Night Works

How Premier Deliver Results



Our Mission?

One lift at a time, we want to help shape Victoria's infrastructure and construction industries for the future.

Our Values?

At Premier, our company culture is the key to our success at Premier, we are dedicated to providing our team and clients with the same level of respect and fulfillment..

#TeamLifting. We developed the notion to encourage our team to support, teach and embrace working together to ensure that everyone skills and knowledge are shared continuously. We believe that empowering our team to lead and make decision encourages them as individuals to evolve and consistently deliver the works to a high standard.

"Can-Do" Attitude. Lets be real, things don't always go to plan onsite. We are here to understand your challenges and collaboratively work through them to achieve the best solutions.

Core Competencies

INVOLVEMENT - HOW MUCH DO OTHERS CARE AFTER THEY HAVE WON THE JOB?

Our Client's success is our success. Premier's departmental structure is strategically built to ensure operational excellence, efficiencies, and continuous improvement across the entirety of your project.

- Heavy-Lift Superintendent leading heavy lift works
- Allocated Leading Hand for seamless operations and minimal delays
- Unique scheduling systems ensuring the right crews show up with the right lifting equipment
- Scalable and capable field crews



CLEVER ENGINEERING

With an extensive in-house team of engineers, supported by innovative software, Premier's lift plans are made for the ever-evolving rigid construction sites.

- ✓ Lift Studies ✓ Site Surveys ✓ Site Analysis ✓ Lift Plans ✓ CAD Blocks

OUR PROMISE ON SAFETY

At Premier Cranes & Rigging the protection of our people, clients, the public and the environment are our top priority.

Here's how we deliver on those promises:

- Safety Manager involved in the planning and execution of high-risk works
- Lift Risk Assessments
- Innovative, Digital Safe Work Method Statement (SMWS) generator
- Triple ISO Accreditation & supporting policies



Some of Our Projects

96T Bridge Girder Installation



CRANE: LR 1350/1

CHALLENGES

Premier Cranes executed a demanding project involving the lifting and installation of two 96t bridge girders at 420 Footscray Road, between City Link Bridges and V/Line Rail Tracks. The operation was characterized by challenges such as limited space, proximity to rail tracks, heavy loads, time constraints, and the need for mid-air splicing.

OUTCOMES

To overcome these obstacles, Premier Cranes employed innovative solutions. They conducted a thorough site survey to pinpoint optimal setup locations, utilising 3D modeling for precise lift and assembly planning, ensuring minimal interference during the lift. The choice of the LR 1350 /1 crawler crane with a Vario ballast capable of adjusting from 9m to 15m effectively managed space limitations. The inclusion of synching hoists and the Vario Derrick aided in fine-tuning rigging adjustments and addressing restricted tolerances. Close collaboration with the client's project team allowed for the allocation of correct resources and the implementation of rigorous control measures.

Launching Gantry Frame Relocation



CRANES: LTM 1450-8.1 & AT40

CHALLENGES

Premier Cranes was engaged to relocate a launching gantry support assembly during ongoing overhead road construction at the Footscray elevated road. A significant challenge was the limited clearance for the crane due to 14m tall parallel overhead roads, separated by a mere 2.4m gap. The gantry itself rested 2.1m above the under-construction road, making this project uniquely challenging. Initially planning an over-road lift so the crane could set up outside the busy site, would have required road closures.

OUTCOMES

We adopted a comprehensive strategy involving 3D modeling to identify an optimal crane setup location and lift path within the tight clearance and engaged a Site Surveyor for a thorough feasibility assessment. Rather than an over-road lift, the Liebherr 450t mobile crane, was strategically positioned onsite between the twin bridges under construction, maintaining uninterrupted traffic flow in response to evolving traffic management conditions. Collaborative efforts between the crane crew and the gantry team facilitated real-time adjustments ensuring safety and precision during the lift.

Some of Our Projects

TOWER CRANE INSTALLATION



CRANES: LTM 1250-5.1 & MAC25

CHALLENGES

The challenges at the installation point, included tight access area & low hanging high-voltage transmission lines that severely limited the boom extension capabilities. Moreover, site access included an 800m long ramp on a steep grade near the busy West Gate Freeway. Meanwhile, consideration was placed towards other contractors working onsite simultaneously.

OUTCOMES

Premier addressed these challenges through detailed job planning, extensive equipment resources like drop decks with hurdles, and meticulous planning. The process included:

1. Mast assembly & installation.
2. Slew Mount assembly & installation.
3. Boom section assembly & installation.

TEMPORARY TOWER TOP DECK LIFT



CRANE: LTM 1450-8.1 & 17.5m Luffer

CHALLENGES

Executing the lift of a 67-tonne top deck for a temporary tower presented distinct challenges. While the Liebherr LTM 1450 - 8.1 crane was well-suited for the load, potential clashes between the luffing fly rope and acro props demanded careful consideration. Precise execution within a tight road shutdown timeframe was essential, and load weight variations during testing required immediate reassessment.

OUTCOMES

In response to evolving load specifications, our planning team demonstrated remarkable adaptability by developing an alternative rigging methodology. They introduced a 17.5m TN luffing fly to the Liebherr 450t crane, increasing the rigging height to satisfy the minimum 60-degree rigging angle mandated by lifting lug restrictions. This extension provided the necessary headroom for an extended rigging setup, effectively preventing clashes between the winch rope and acro props. The project's success underscores Premier's capability to deliver at a high standard under challenging conditions.

A Snippet Of Our Team



Matt Clark

Director

☎ 0488 388 588

✉ matt@premiercranes.com.au

🌐 linkedin.com/in/matt-v-clark



Steve Warton

Director

☎ (03) 9311 1499

✉ steve@premiercranes.com.au

🌐 linkedin.com/in/steve-warton/



Chi Shankar

Chief Executive Officer

☎ 0401 527 838

✉ chi@premiercranes.com.au

🌐 linkedin.com/in/chi-shankar-3a435016/



Jamie Shanahan

Chief Operating Officer

☎ 0407 804 999

✉ jamie@premiercranes.com.au

🌐 linkedin.com/in/jamie-shanahan-b39aa9a8/



Kye Giacomini

Head of Business Development

☎ 0427 284 006

✉ kye@premiercranes.com.au

🌐 linkedin.com/in/kye-giacomini-98bb66150/



Arthur Jin

Engineering Manager

☎ 0411 295 138

✉ arthur@premiercranes.com.au

🌐 linkedin.com/in/hongfei-jin-656803117/



Peter Koch

Heavy Lift Superintendent

☎ 0402 425 352

✉ peter.k@premiercranes.com.au

🌐 linkedin.com/in/peter-koch-340ba698/



Jason Wright (Happy Feet)

Heavy Lift Superintendent

☎ 0450 324 532

✉ jason@premiercranes.com.au

🌐 linkedin.com/in/jason-wright-52630591/



Rhys Chambers

Solutions Manager

☎ 0422 668 826

✉ rhys@premiercranes.com.au

🌐 linkedin.com/in/rhys-chambers-531071207/



Stephen Nardi

Solutions Coordinator

☎ 0422 668 826

✉ stephen@premiercranes.com.au

🌐 linkedin.com/in/stephen-nardi-73580989/

Featured Clients

WEST GATE TUNNEL
PROJECT

**NORTH
EAST LINK**
PROGRAM

CPB
CONTRACTORS

**JOHN
HOLLAND**

MULTIPLEX

lendlease

westkon
PRECAST

**HUTCHINSON
BUILDERS**
Established 1912

FREYSSINET

hickory

CIVILINFRASTRUCTURE
GROUP

BORAL™

tennis

SPEEDPRO

FORM 700

RATED
5/ ★★★★★
ON GOOGLE

SCAN ME





HEAD OFFICE - SUNSHINE

☎ (03) 9311 1499

✉ sales@premiercranes.com.au

Address:

7-8 Ovens Court, Sunshine West, VIC 3020

EASTERN DEPOT - RINGWOOD

☎ (03) 9938 9833

✉ sales@premiercranes.com.au

Address:

17/100 New Street, Ringwood, VIC 3134

LOGISTIC HUB - LAVERTON NORTH

☎ (03) 9311 1499

✉ sales@premiercranes.com.au

Address:

69 Patch Circuit, Laverton North Vic 3026